

enCORE DETAILS:

REV 3

Registration for classes at ENCORE can be completed online, in person, or via email. An annual membership fee of \$25 per student/\$40 per family is due upon registration. Once a student is registered, we consider them enrolled through May, and correct level placement is required. Classes fill quickly, so joining waitlists is encouraged. Changes are noted by revision updates located in the top right corner of the page.

Class placement is guaranteed with the first tuition payment, with subsequent payments processed on the third Tuesday of each month. Tuition is a fixed monthly charge, including 3 to 5 classes per month. (averaging 4 per month). Payments are not prorated for vacations, holidays, closures, or absences, and the last payment is in April, though instruction continues through May. Missed classes can be made up during the current season (September to May) by submitting a makeup request form on the website. You will receive an invoice after each processing date. A \$10 fee will occur for late payments.

ENCORE may cancel or combine classes based on demand. If a class is canceled for the season and no comparable class is available, a prorated refund will be issued. To withdraw from a class, submit a cancellation form on the website before the tuition processing date. Fees incurred before withdrawal are the student's responsibility. Class switches are allowed once per season, but recital class switches are not permitted after January 15th without instructor approval due to choreography preparation.

Calendar Highlights

see our website for details on all ENCORE happenings; click 'Calendar'

September '24

- 3: Fall/Spring S.14 Begins
- 7: Beaverton Parade (All ENCORE dancers welcome to join us!)

October '24

- 21st - 26th: Fall Spirit Week
- 26th/27th: October Moon Festival & Youth Kids Battle

November '24

- 27th - 30th: ENCORE Closed

December '24

- 8th: *NEW* HOLIDAY SHOW
- 16th - 21st: Parent Watch Week
- 23rd - Jan 4th: ENCORE Closed

January '25

- 6th: Classes Resume
- 10th: Recital Fee Auto Process

February '25

- 7th: Musical Theater Costume Fee Auto-Process

March '25

- 24th - 29th: ENCORE Closed

April '25

- 5th/6th: Company & Crew Showcase Performance
- 14th - 19th: Spring Spirit Week

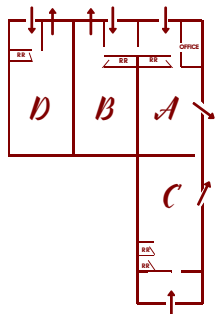
May '25

- 10th: 14th Annual Dance Recital
- 19th-24th: Bring a Friend Week
- TBA Willy Wonka Musical Theatre
- 31st: Last day of S.14

June '25

- 1-15th: ENCORE Closed
- 16th: Summer '25 Begins

ENCORE Map



Monthly Tuition Chart*

*See Tuition Info Above

30 min	\$35	3.5 hrs	\$198	6.5 hrs	\$282
45 min	\$52	3.75 hrs	\$208	6.75 hrs	\$286
1 hr	\$68	4 hrs	\$218	7 hrs	\$290
1.25 hrs	\$85	4.25 hrs	\$226	7.25 hrs	\$298
1.5 hrs	\$102	4.5 hrs	\$234	7.5 hrs	\$306
1.75 hrs	\$119	4.75 hrs	\$242	7.75 hrs	\$314
2 hrs	\$132	5 hrs	\$250	8 hrs	\$322
2.25 hrs	\$144	5.25 hrs	\$256	8.25 hrs	\$331
2.5 hrs	\$155	5.5 hrs	\$262	8.5 hrs	\$339
2.75hrs	\$161	5.75 hrs	\$268	8.75 hrs	\$347
3 hrs	\$178	6 hrs	\$274	9 hrs	\$355
3.25 hrs	\$188	6.25 hrs	\$278	Unlimited	\$365

2nd child 15% off*
3+ children 20% off*
Family Max: \$490*

Drop In Pricing

All drop-ins are on a first come, first served basis.

1h or less..... \$18
over 1h..... \$22
1st Trial Class.... FREE

*Family member(s) with the fewest classes qualify for the discounted rate

*Musical Theatre is a flat rate of \$90 monthly and is not included in our season tuition chart. Musical theatre runs to the end of our season with an excerpt in our annual recital.

ACCEPTING NEW STUDENTS!

ENCORE Hours:
M-F 10a-8pm
Sat 10a-12pm

7700 SW Nimbus Ave. Bldg. 10 Beaverton, OR 97008
info@encorepacnw.com www.encorepacnw.com
503-608-7207 Quick Response: Text Us!

Times	Monday			Tuesday			Wednesday			Thursday			Friday		Saturday	
	Level Key:	Sub B	Sub C	Sub D	Sub A	Sub B	Sub C	Sub D	Sub A	Sub B	Sub C	Sub D	Sub A	Sub B	Sub A	Sub B
10:00 AM																
10:15 AM																
10:30 AM																
10:45 AM																
11:00 AM																
11:15 AM																
11:30 AM																
11:45 AM																
12:00 PM																
12:15 PM																
12:30 PM																
12:45 PM																
1:00 PM																
1:15 PM																
1:30 PM																
1:45 PM																
2:00 PM																
2:15 PM																
2:30 PM																
2:45 PM																
3:00 PM																
3:15 PM																
3:30 PM																
3:45 PM																
4:00 PM																
4:15 PM																
4:30 PM																
4:45 PM																
5:00 PM																
5:15 PM																
5:30 PM																
5:45 PM																
6:00 PM																
6:15 PM																
6:30 PM																
6:45 PM																
7:00 PM																
7:15 PM																
7:30 PM																
7:45 PM																
8:00 PM																
8:15 PM																
8:30 PM																
8:45 PM																

Instructors: Bryaissa Jones (BJ), Gas Majewski(CM), Decimus (D), Grace Armstrong (GA), Jada Terry (JT), Jujū Nikz (JN), Lisa Rose (LR), Liz Aguilā (LA), Marketa Duffin (MD), Melissa Rumsey (MR), Moira Corbett (MC), Nicholas Christopher (NC), Oscar Guerrero (GO), Piper Ryan (PR), PopNTod (PT), Rotating Instructor (RI), Ramón Rodríguez (RR), Sara White (SW), Valerie Dawn (VD), Staff (ST),

Class Information:

- Ages listed are guidelines only. Some students (based on skills) may be able to join classes outside the age range. Inquire via email for an assessment.
- Our prerequisites, class etiquette, class descriptions, style attire and instructor bios are on our website.
- An * indicates that the previous class is required in order to register.
- Our classrooms are strictly for students & instructors only, thus allowing for a more focused learning environment.
- Our Company & Crew classes are audition only, inquire via email for a private audition.

Willy Wonka (MT) Musical Theatre

Join our musical theatre classes on Tuesdays. No experience, or audition is necessary for registration. Students will learn acting skills, audition skills, and how to dance/sing while building confidence to take the stage. In-class auditions will occur in early October and each student will receive a part in the musical. Costume fee (\$85) will be auto-processed on Jan. Students will take the stage in late May/early June (more details coming). Our musical theatre program is \$90 a month and is not included in our sliding scale payment structure.

Holiday Show - Dec 8th

Select Classes & Students will be asked to participate in our Holiday Show on December 8th, 2024 at the Sherwood Center for the Arts. More details to be released soon!

Recital Fee

Our end of season recital will be held on May 10th at the Sherwood Center for the Arts, with rehearsals starting on May 5th. Recital students/classes may be charged a costume fee of up to \$85 per class, per student. Students may be asked to purchase additional items such as shoes, tights, jewelry and the like to complete the full look. All costumes are yours to take home after recital. Fees auto-charged! February 6th. Costumes must be paid in full before the student is able to receive these items. We are unable to offer any refunds for recital costume costs. More information will be coming later in the season.

See our PDF and/or website at www.encoreperformingarts.com for additional information. REV 3.1